

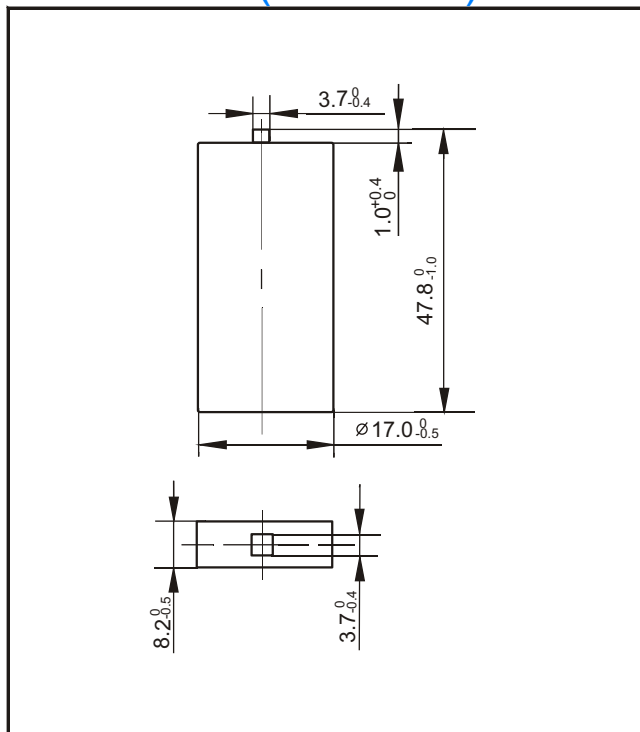
Ni-MH Prismatic Battery Individual Data Sheets

Type: H-PF8 1050

Specifications

Nominal voltage		1.2V		
Capacity ¹		0.2C Discharge	1C Discharge	
	Minimum	1050mAh ²	945mAh	
	Typical ³	1155mAh	1050mAh	
Dimensions		mm	inch	
	Width	17.0 ⁰ _{-0.5}	0.67 ⁰ _{-0.020}	
	Thickness	8.2 ⁰ _{-0.5}	0.32 ⁰ _{-0.020}	
	Height	47.8 ⁰ _{-1.0}	1.88 ⁰ _{-0.039}	
Weight ⁴		Grams	Ounces	
		24	0.846	
Internal impedance ⁴ at 1000Hz.		30mΩ (After charge)		
Charge	Standard	105mA(0.1C) X 15hrs		
	Rapid	1050mA(1C) X 1.2hrs		
Ambient temperature	Charge		°C	°F
		Standard	0°C to 45°C	32°F to 113°F
	Rapid	10°C to 40°C	50°F to 104°F	
	Discharge	-20°C to 65°C	-4°F to 149°F	
	Storage	-20°C to 45°C	-4°F to 113°F	

Dimensions(with tube) (mm)

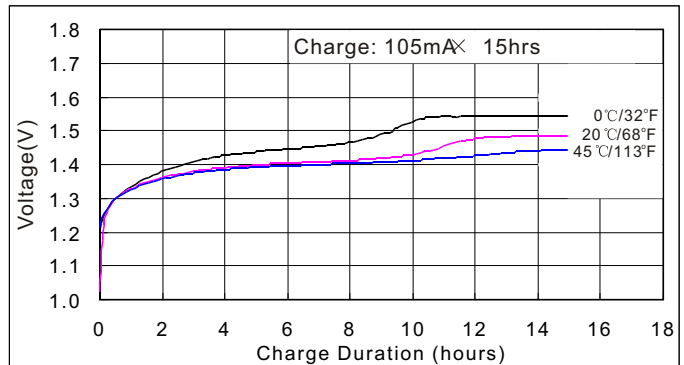


Note:

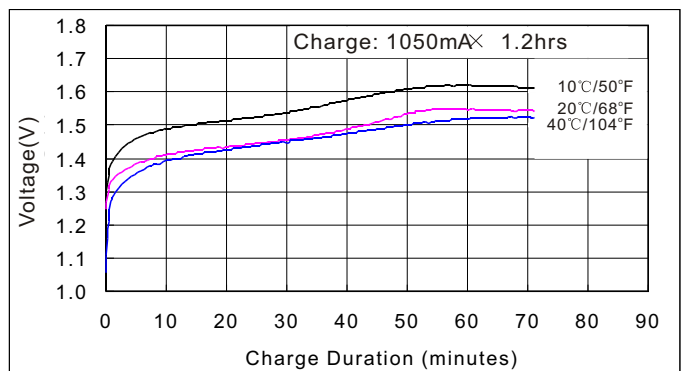
1. After charging at 0.1C for 15 hours.
2. Nominal capacity, rated at 0.2C, 20°C
3. Average capacity. For reference only.
4. Weight and internal impedance are for reference.

Typical Characteristics

Standard charge characteristics



Rapid charge characteristics



Discharge characteristics at various rate

