

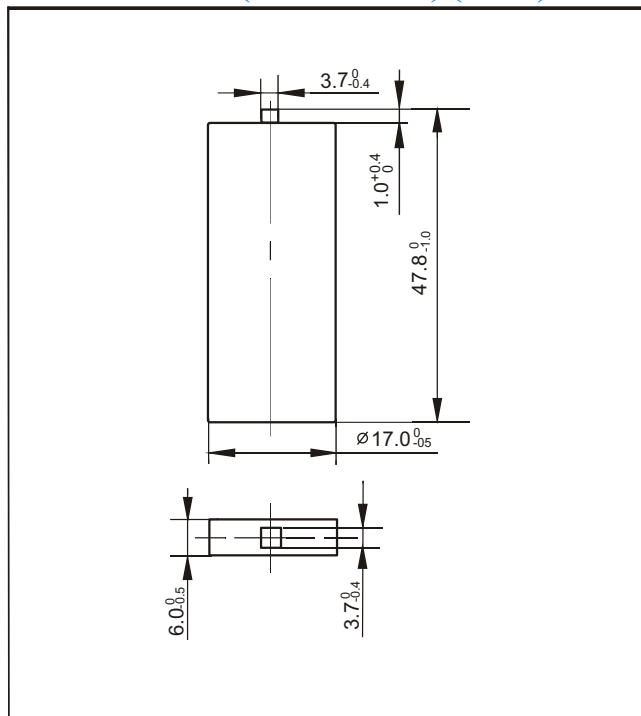
# Ni-MH Prismatic Battery Individual Data Sheets

## Type: H-PF6 850

### Specifications

Nominal voltage		1.2V	
Capacity <sup>1</sup>		0.2C Discharge	1C Discharge
	Minimum	850mAh <sup>2</sup>	765mAh
	Typical <sup>3</sup>	929mAh	850mAh
Dimensions		mm	inch
	Width	17.0 <sup>0</sup> <sub>-0.5</sub>	0.67 <sup>0</sup> <sub>-0.020</sub>
	Thickness	6.0 <sup>0</sup> <sub>-0.5</sub>	0.24 <sup>0</sup> <sub>-0.020</sub>
	Height	47.8 <sup>0</sup> <sub>-1.0</sub>	1.88 <sup>0</sup> <sub>-0.039</sub>
Weight <sup>4</sup>		Grams	Ounces
		17.0	0.599
Internal impedance <sup>4</sup> at 1000Hz.		30mΩ (After charge)	
Charge	Standard	85mA(0.1C) X 15hrs	
	Rapid	850mA(1C) X 1.2hrs	
Ambient temperature	Charge		°C
		Standard	°F
	Standard	0°C to 45°C	32°F to 113°F
	Rapid	10°C to 40°C	50°F to 104°F
Discharge	-20°C to 65°C		-4°F to 149°F
Storage	-20°C to 45°C		-4°F to 113°F

### Dimensions(with tube)(mm)

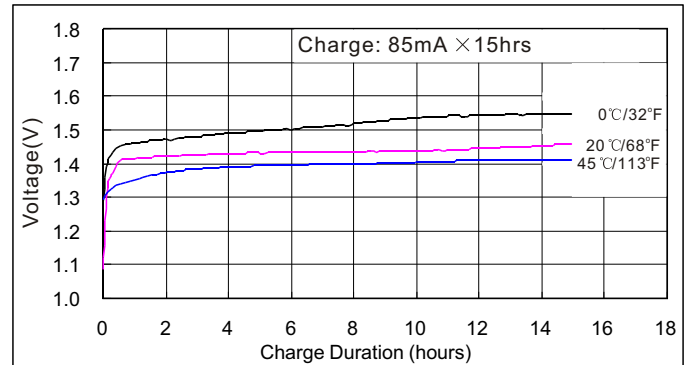


Note:

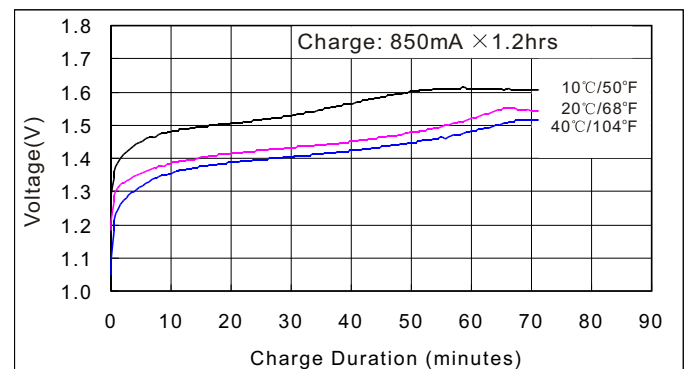
1. After charging at 0.1C for 15 hours.
2. Nominal capacity, rated at 0.2C, 20°C
3. Average capacity. For reference only.
4. Weight and internal impedance are for reference.

### Typical Characteristics

#### Standard charge characteristics



#### Rapid charge characteristics



#### Discharge characteristics at various rate

