

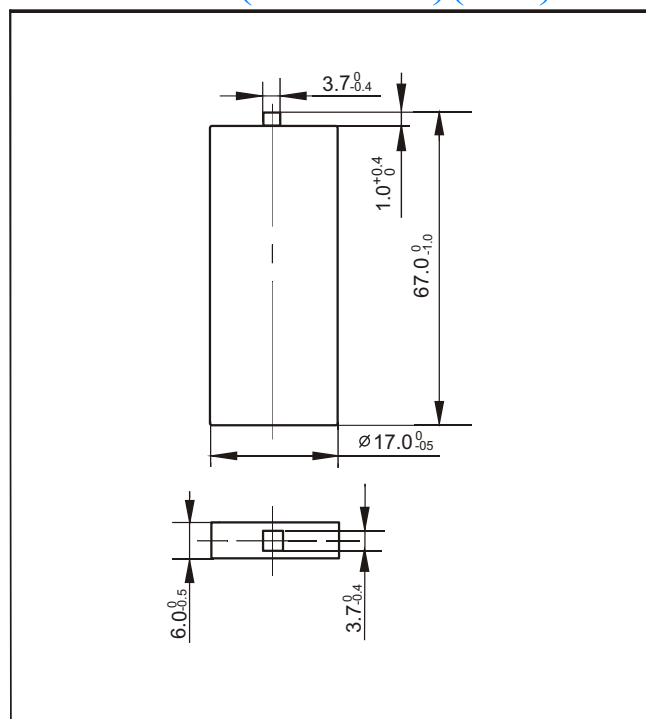
Ni-MH Prismatic Battery Individual Data Sheets

Type: H-P7/5F6 1100

Specifications

Nominal voltage		1.2V	
Capacity ¹		0.2C Discharge	1C Discharge
	Minimum	1100mAh ²	990mAh
	Typical ³	1210mAh	1100mAh
Dimensions		mm	inch
	Width	17.0 ⁰ _{-0.5}	0.67 ⁰ _{-0.020}
	Thickness	6.0 ⁰ _{-0.5}	0.24 ⁰ _{-0.020}
	Height	67.0 ⁰ _{-1.0}	2.64 ⁰ _{-0.039}
Weight ⁴		Grams	Ounces
		25.0	0.881
Internal impedance ⁴ at 1000Hz.		30mΩ (After charge)	
Charge	Standard	110mA(0.1C) X 15hrs	
	Rapid	1100mA(1C) X 1.2hrs	
Ambient temperature	Charge		°C
		Standard	°F
	Standard	0°C to 45°C	32°F to 113°F
	Rapid	10°C to 40°C	50°F to 104°F
	Discharge	-20°C to 65°C	-4°F to 149°F
Storage	-20°C to 45°C	-4°F to 113°F	

Dimensions(with tube)(mm)

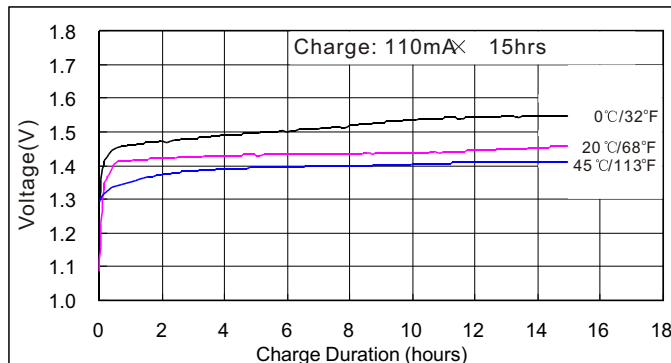


Note:

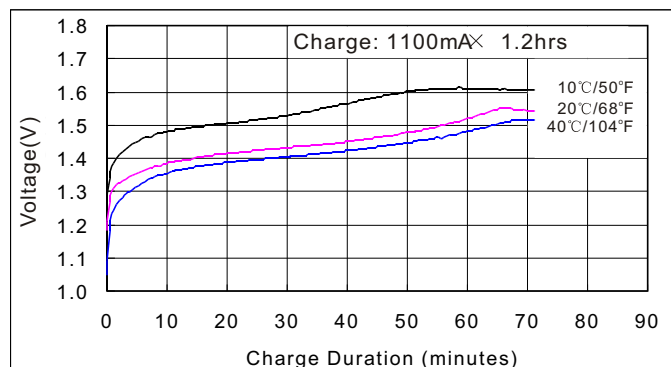
1. After charging at 0.1C for 15 hours.
2. Nominal capacity, rated at 0.2C, 20°C
3. Average capacity. For reference only.
4. Weight and internal impedance are for reference.

Typical Characteristics

Standard charge characteristics



Rapid charge characteristics



Discharge characteristics at various rate

